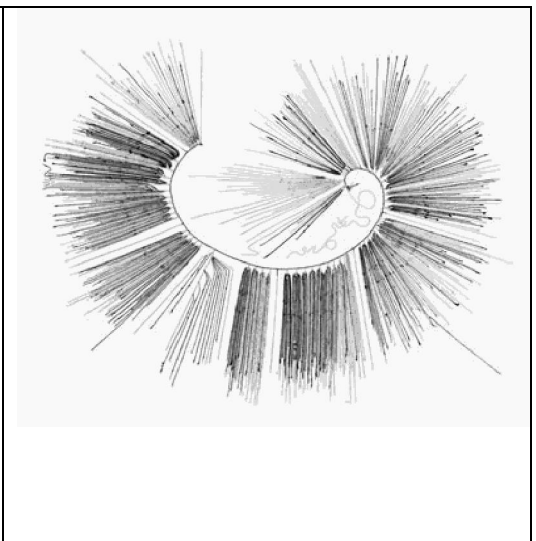


Archaeology 100-D200

# Ancient Peoples and Places

Spring 2012



**Lecture:** Monday 12:30-2:20 pm & Wednesday 12:30-1:20 pm (SWH 10081).

**Instructor:** Dr. Alvaro Higuera. **Office Hours:** Monday 3:00-5:00 pm & Wednesday 2:00-4:00pm @ EDB 9613. **E-mail:** [ahiguera@sfu.ca](mailto:ahiguera@sfu.ca). **Teaching assistants:** Sarah Oas ([saelizab@gmail.com](mailto:saelizab@gmail.com)) and Travis Freeland ([tfreelan@sfu.ca](mailto:tfreelan@sfu.ca)).

**Office hours:** Travis, Tuesdays from 12:00 to 2:00. Sarah, Thursdays from 10:00 to 12:00 @ SWH 9084 aka the Material Culture Lab.

Website for the course on WebCT &

[http://www.tiwanakuarcho.net/sfu\\_AP2012/index.htm](http://www.tiwanakuarcho.net/sfu_AP2012/index.htm)

## Course Description:

In this course we will review the 40,000 year old sequence in which human societies create, recreate and change their social and political organization in a sequence that has led from band structures to state-level systems. At some point in the sequence, the degree of complexity shown by human societies warrants the use of the qualifying, but vague, term of civilization, a stage in the evolution of human societies that denotes complexity. As such, we will underline throughout this course that complexity starts from the very moment that people establish strategies to hunt and gather, when the control a large territory in which they are deeply rooted. From then on, in both the Old and New Worlds, complexity with take different forms and scales.

## Required Readings:

1. Textbook: Chazan, Michael (2012) World Prehistory and Archaeology: Pathways through Time. Pearson Education. Canadian Edition. 2nd edition. *Note: The use of the first Canadian Edition or the second US edition is tolerated. But it is responsibility of the students to make sure the issues studied have not been drastically updated.*
2. Extra tasks: suggested websites visits.

## Course Evaluation:

- **MyAnthroKit tests** online; on your own, along the semester (10%);

- **Two quizzes** (covering sections of the course; multiple-choice questions): 12% and 15% of the grade each. (Time 25-30 m). (25%)
- **Midterm exam** (covering the first part of the course; multiple-choice questions): 25% of the grade. (Time 45-60 m).
- **Final exam** (covering the full course; multiple-choice questions): 40% of the grade. (Time 1.45-2.00 h). Scheduled on April 13, 8:30 - 11:30 (no room has been assigned yet).

### **Class E-Mail List:**

There is a class e-mail list, which will send you information and updates on the class. Your SFU e-mail account will automatically be added to the list when you register for the course. Activate your SFU e-mail account. Use the forward option if you use another e-mail account off campus.

## **Proposed schedule**

### **Week 1 - Jan 9 & 11**

#### **INTRODUCTION: MATTER, TIME & SPACE**

- > Class mechanics and procedures; grading system; *MyAnthroKit*, Learning resources and details; the book (our trowels!);
- > Dogmas & basic concepts: **civilization**; path towards complexity - *parallel trajectories* and diffusionism; aliens and others;
- > Archaeology and us, in modern societies;
- > Dangers affecting heritage; the concept of "World Heritage Site";
- > Where in the world are our regions, our cradles of **civilization**? Maps! and what do they represent in the continuum of political evolution.

#### **On the web:**

Start exploring the [Flash Modules on Methods and Techniques in Archaeology](#). Concentrate on "20th century tendencies in archaeology" and its quiz. Also browse <http://www.sfu.ca/archaeology/museum/stratigraphy/INDEX.HTM>.

### **Week 2 - Jan 16 & 18**

#### **THE ARCHAEOLOGICAL ENDEAVOR: M & T. HISTORY, METHODOLOGIES AND TECHNIQUES**

- > What does archaeology do for the study of ancient societies?
- > What is *Theory* and what is *Method*? The basic, middle and high aims of the discipline.
- > You say you want a Revolution? Revolutionary moments in archaeology;
- > Understanding the strategy, hypothesis and objectives, fieldwork and laboratory stages in archaeological research.

**Reading:** MZ, Chapters 1 & 2.

**On the web:** [Flash Modules on Methods and Techniques in Archaeology](#).

Mapping Ancient Civilization, in a Matter of Days: <http://tinyurl.com/2eakcfc>.

### **Week 3 - Jan 23 & 25**

## **THE ORIGINS AND EVOLUTION OF HUMANS**

- > A review of the evolution of the human species and the first evidence for “culture”;
- > Hunter-gathering populations: societies before “civilization”... at the start of the path of ever-increasing complexity.
- > The Neanderthal dilemma and the supremacy of Homo Sapiens

**Reading:** MZ, Chapters 3, 4 & 5.

**Viewing Film (Jan 25):** BBC - Horizon - 2005 - Neanderthal.

**On the web:** Neanderthals' Tools Were Their Own Work:

<http://tinyurl.com/239jc2u>.

Lucy's Kin Carved up a Meaty Meal: <http://tinyurl.com/22tch2d>.

### **Week 4 - Jan 30 & Feb 1**

#### **INCREASING STRUCTURAL COMPLEXITY IN HUMAN SOCIETIES & THE FIRST REVOLUTION**

- > Neolithic revolution. The origins of agriculture: models and perspectives;
- > Religion and ritual at play in human organization;
- > Features in the structure of Neolithic human organization.

**Reading:** MZ, Chapter 7 .

**On the web:** Explore <http://www.catalhoyuk.com/> (Especially

<http://www.catalhoyuk.com/database/catal/areas.asp>)

**QUIZ 1 (Feb 1):** covers weeks 1 to 3; 15%; time 25-30 m.

### **Week 5 - Feb 6 & 8**

#### **PEOPLING OF THE NEW WORLD; ANCIENT PEOPLES AND PLACES IN DISTRESS! PRESERVING, PROMOTING AND DISPLAYING THE PAST**

- > Peopling of the New World.
- > Heritage and the destruction of the past. Archaeologists, collectors & traffickers; how the past and knowledge is lost; the role of museums and heritage, yesterday, today and tomorrow.
- > TA Sarah Oas will make a presentation of her research on archaeobotanical remains from an early Holocene rock shelter in Ghana.

**Reading:** MZ, Chapter 6.

**On the web:** Met Is to Repatriate to Egypt Artifacts from King Tut's Tomb

<http://tinyurl.com/244dvbc>

The Met, Ending 30-Year Stance, Is Set to Yield Prized Vase to Italy

<http://tinyurl.com/23ly7wb>

Is It All Loot? Tackling the Antiquities Problem <http://tinyurl.com/2ev92jx>

**Viewing Film (Feb 8):** The Lost Pyramids of Caral. A BBC Horizon production:

### **Feb 13 & 15 - Reading Break (no classes)**

### **Week 6 - Feb 20 & 22**

#### **NEOLITHIC IN THE AMERICAS AND THE WORLD. INCREASING SOCIAL COMPLEXITY WITH DOMESTICATION.**

- > Agriculture and domestication in the Americas and the World.
- > Political structures and increasing complexity in human organization.

**Reading:** MZ, Chapters 8 & 9.

**Viewing Film (Feb 22):** The Lost Pyramids of Caral. A BBC Horizon production.

### **Week 7 - Feb 27 & 29**

#### **THE FEATURES THAT MAKE COMPLEX SOCIETIES, WELL, MORE COMPLEX. AN IMPORTANT AND POPULAR STAGE ON THE WAY TO HIGH SOCIETY: THE CHIEFDOM.**

>The most common stage of political organization: its features and the Chief; How do they get to be chiefdoms? Large, complex political structures but something is missing. How do they *not* get to be (some by a hair) a State?

> Elements of complexity: administration, labor division & control, water control, ritual calendar, inherited power, social hierarchies;

> The origins of writing. Writing and its purpose in world societies; *Prehistory becomes History*, but archaeology still in demand.

**Reading:** MZ, Chapter 10.

**On the web:** On Writing, Hunting for the Dawn of Writing, When Prehistory Became History <http://tinyurl.com/27bpsue>.

On Quipus: High in the Andes, Keeping an Incan Mystery Alive <http://tinyurl.com/32e3l2x>

### **Week 8 - Mar 5 & 7**

#### **FROM TOWNS TO CITIES & THE SECOND REVOLUTION**

> Development of the settlement of a town, towards the city; Regional settlements: patterns of division, unification; towards Hyper-urbanism and "the World-at-a-City-Scale".

> A comparative approach to where and how early urban societies develop;

> Models and ideas (some say "theories") on the origin of state-level societies.

> The structure of a city and social hierarchies. Forbidden cities and social cosmogony. Comparing cases of urban planning.

**MIDTERM exam (Mar 7):** covers weeks 1 to 7; 25%; time 45-60 m.

### **Week 9 - Mar 12 & 14**

#### **EVOLUTION OF POLITICAL COMPLEXITY IN EGYPT & MESOPOTAMIA. SOCIAL HIERARCHIES IN PREHISTORIC AND HISTORIC SOCIETIES: STUDYING BURIALS**

> Mesopotamia.

> Egypt.

> Social hierarchy and archaeological correlates: The burial and funerary patterns.

**Reading:** MZ, Chapter 11.

**Viewing Film (Mar 14):** Unlocking the Great Pyramid. 2009. National Geographic.

### **Week 10 - Mar 19 & 21**

## **EVOLUTION OF POLITICAL COMPLEXITY IN EUROPE AND ASIA: SECONDARY STATES. BORED OF THEIR NEIGHBORHOOD: WHEN STATES START CONQUERING AND BECOME EMPIRES**

- > Chazan says "enigmatic". We see how archaeology is resolving the picture and why enigmas are not that common;
- > "All empires are states. Not all states are empires". The expansion of territories: spatial organization, corporate and administrative architecture in provincial settings;
- > How and why very complex societies get yet more complex... (and will disintegrate for that same reason).

**Reading:** MZ, Chapter 12.

### **Week 11 - Mar 26 & 28**

## **EVOLUTION OF POLITICAL COMPLEXITY IN MESOAMERICA; ECONOMIES, TRADE AND ANCIENT ROUTES / EBB & FLOW, THE DECLINE OF EMPIRES**

- > Mesoamerica;
- > Mapping natural resources in the "world" of prehistoric societies; the expansion of their "borders" as they need more goods;
- > Exchange, currency, barter: evolution of means of exchange in prehistory.
- > The decline of states and empires: bring down the top, let the people free. The role of climate in disrupting cultural processes and internal factors.
- > **TA** Travis Freeland will make a presentation on a theme of geochemistry and the archaeology of the South Pacific.

**Reading:** MZ, Chapter 13.

**QUIZ 2 (Mar 28):** covers weeks 7 to 10; 15%; time 25-30 m.

### **Week 12 - Apr 2 & 4**

## **EVOLUTION OF POLITICAL COMPLEXITY IN THE ANDES; ANCIENT TECHNOLOGIES & USES OF THE PAST**

- > The Andes;
- > A review of the technological achievements in ancient societies (Hydraulic technology and the advances in water management);
- > Ethnographic analysis and experimentation to learn about past technologies;
- > Politics in archaeology: mismanagement and misinterpretation of the past;
- > Conclusions to the course: how do we perceive archaeology at this point?

**Reading:** MZ, Chapter 14.

**Extra reading:** A Lesson in Applied Archaeology. Clark Erickson.

<http://archaeology.about.com/cs/agriculture/a/erickson1.htm>

### **Week 13 - Apr 11**

## **OVERVIEW AND CONCLUSIONS.**

**April 13, 8:30 - 11:30** (no room has been assigned yet). **FINAL exam:** covers the full course; 40%; time 2.5 h.

(end)